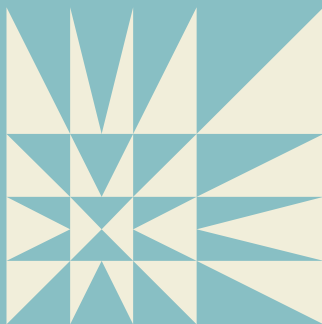


PASSPORT

TO LEARNING

2025



SHELBURNE
MUSEUM

Name:

Museum Map



Guided Workshops

- 1 Round Barn: A
Bird's Eye View—Map
Investigation
- 2 Railroad Station:
Train Tracking
- 3 *Ticonderoga*: Simple
Machines on the
Ticonderoga
- 4 General Store:
Shop 'til You Drop
- 5 Schoolhouse:
1840s School Day
- 6 Pizzagalli Center:
Printmaking

Self-Guided Workshops

- A Circus Building
- B Beach Lodge
- C Blacksmith Shop
- D Print Shop
- E Sawmill & Natural
Resources
- F Webb Gallery

Table of Contents

1	Round Barn: A Bird's Eye View–Map Investigation (Guided)	17	1840 Schoolhouse (Guided)
3	Circus Building (Self-Guided)	18	Sawmill & Natural Resources (Self-Guided)
5	Railroad Station: Train Tracking (Guided)	19	Webb Gallery (Self-Guided)
6	Beach Lodge (Self-Guided)	21	Printmaking (Guided)
7	<i>Ticonderoga</i> : Simple Machines on the <i>Ticonderoga</i> (Guided)	22	Activity Page
		23	End-of-Day/ Post-Trip Reflection
13	General Store: Shop 'til You Drop (Guided)		
15	Blacksmith Shop (Self-Guided)		
16	Print Shop (Self-Guided)		

School Programs are generously supported by the Marie and John Zimmermann Fund and the George W. Mergens Foundation, with additional support from the MGN Family Foundation.

Shelburne Museum programs are also generously supported by our Members and donors to the Annual Fund.



Round Barn

A Bird's Eye View—Map Investigations (Guided)

If full, visit Circus Building or Beach Lodge.

Look closely at your map to find:

A body of water. What is it called?

Modes of transportation on both land and water.
What did you find?

Find the largest building in the city/town.
What number do you see next to the building?

Use the key to find the name of the building.
What is it called?

Now, look around at the land and space around the city/town.
What do you notice? **Talk about it!**

Next, check in with the Museum Educator to get a current
map of your city/town.

Compare the current map with the historical map. What are
some similarities? What are some differences? What are some
questions you have? **Talk about it!**



Circus Building

(Self-Guided)

Explore the Circus Building. What are some of the animals you see in both carvings and posters? Write a list or draw the animals here:

After exploring the Circus Building, imagine you were at a circus 100 years ago. What would it sound like? Look like? Smell like? What would the mood feel like? Write or talk about it.

Have you ever been to a circus before? If so, how do you think a modern circus would be different from circuses 100 years ago? How would it be the same? Write or talk about it.



Railroad Station

Train Tracking (Guided)

If full, visit Beach Lodge or Circus Building.

Telegraph

The telegraph is a system that uses electrical pulses to send coded messages through a wire to a receiver. The message is then decoded on the receiving end. It cannot carry voices or any other communication.

Morse Code

Morse Code is a system of electronic communication. It uses dots, dashes, and spaces to represent letters, punctuation, and numbers. The symbols are arranged to spell out a message.



Beach Lodge (con't.)

(Self-Guided)

Choose an animal, look closely, and create a sketch of what you see. You can **zoom out** and draw all of the animal, or you can **zoom in** on an interesting part and draw that. Can you show the **texture** of the fur?

Think about **why you chose this animal**. You can talk about this with a friend or your teacher/adult.

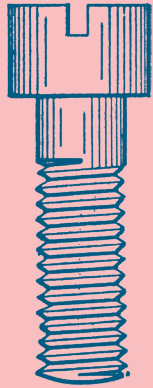


Ticonderoga

Simple Machines on the *Ticonderoga* (Guided)

Search for different kinds of simple machines as you explore the *Ticonderoga*. How many of each kind of simple machine did you find in all? Use tally marks to keep track! Name or describe some of the machines you found.

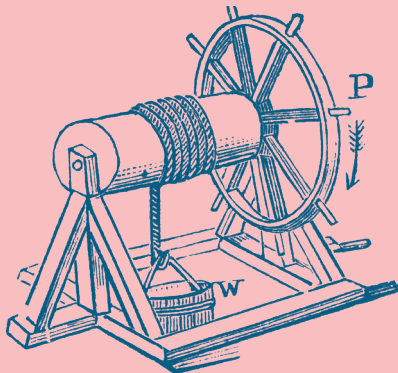
Talk About it: Where did you find the machine? What do you think it does?



Screw

How many did you find?

Name/describe one of the machines:



Wheel & Axle

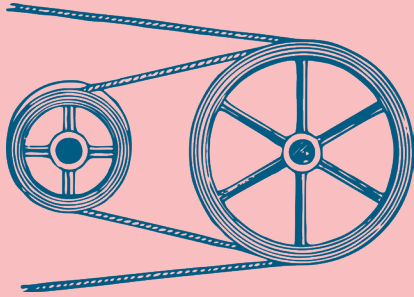
How many did you find?

Name/describe one of the machines:



Ticonderoga (con't.)

Simple Machines on the *Ticonderoga* (Guided)



Pulley

How many did you find?

Name/describe one of the machines:



Inclined Plane

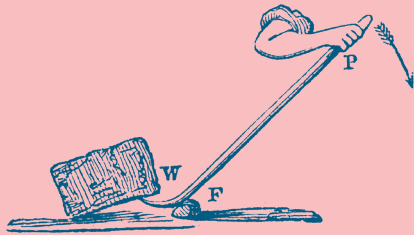
How many did you find?

Name/describe one of the machines:



Ticonderoga (con't.)

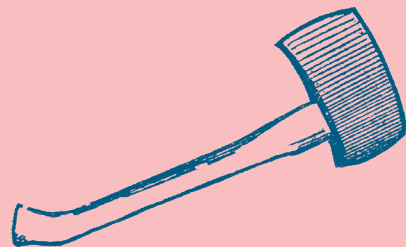
Simple Machines on the *Ticonderoga* (Guided)



Lever

How many did you find?

Name/describe one of the machines:



Wedge

How many did you find?

Name/describe one of the machines:



General Store

Shop 'til You Drop (Guided)

Think about it: What do you think you will find in the General Store?

I am shopping for:

Item name

What item is on your card?

Item #1

Item #2

Item #3

Item #4

Item #5

Look for items that are still needed and used today.
What did you find?

Talk about it: How are these items similar or different from today's items?

Look for items that are no longer needed or used today. What did you find?

Talk about it: Why are these items no longer needed or used today? What have they been replaced by?



Blacksmith Shop

(Self-Guided)

Explore the Blacksmith Shop to find:

- Anvils
- Fireplace poker
- Tongs
- Hooks shaped like the letter “J” and the letter “S”
- Horseshoes for snow and ice
- Coal

What questions do you have about the Blacksmith Shop?

Find some answers to your questions by asking the Blacksmith. Write what you learned below!



Print Shop

(Self-Guided)

Explore the Print Shop to find:

- The smallest printing press
- The biggest printing press
- A large brayer (roller)
- Wood type (letters)
- Metal type (letters)

What questions do you have about the Print Shop?

Find some answers to your questions by asking a Printer. Write what you learned below!



1840s Schoolhouse

(Guided)

If full, visit the Print Shop.

Welcome to the Schoolhouse! Let's travel back in time to the 1840s, where the teacher will be teaching you some lessons today. You will get a stamp from the teacher when you complete your assignments.



Sawmill

Natural Resources at the Museum (Self-Guided)

A natural resource is something that is found in nature and can be used by people. Some of Earth's natural resources are: light, air, water, plants/trees, animals, soil, stone, minerals, metals, and fossil fuels.

Directions: Spend a few minutes exploring the Sawmill, and then fill in the blanks:

The natural resource processed at the Sawmill was

_____.

The Sawmill was powered by _____,
which is another natural resource.

The sawblade is made of _____,
which is also a natural resource.

Talk about it: Answer the questions below by talking with a partner or in your group.

Why was wood an important natural resource in Vermont in the 1700s and 1800s?

How are wood and trees used in Vermont today?



Webb Gallery

(Self-Guided)

Find paintings
that look:

Beautiful

Noisy

Confusing

Lonely

Scary

Calm

Painting name & artist

Directions: Explore the gallery. Match each word to a work of art. There are no wrong answers. Write down the name of the painting and artist next to the word you matched it with. Describe why you chose that artwork.

What do you see in the artwork that makes you think of the word you matched it with? Write or talk about it.



Pizzagalli Center

Printmaking (Guided)

If full, visit the Round Barn or the art gallery on this floor.

Sketch your idea.

Activity Page

Word Search

A	H	A	B	J	C	S	Q	N	C	W	X	V	K	H
S	T	E	A	M	S	H	I	P	H	U	W	O	X	F
C	B	X	X	T	Q	T	E	L	E	G	R	A	P	H
L	S	L	E	C	I	S	U	S	W	B	Z	P	M	P
I	A	C	A	L	A	C	Z	G	A	N	Y	F	T	U
G	K	P	H	C	E	R	O	G	W	W	R	T	L	L
H	G	L	O	O	K	C	O	N	J	R	M	A	Z	L
T	A	C	K	T	O	S	T	U	D	T	K	I	T	E
H	R	D	I	X	H	L	M	R	S	E	H	K	L	Y
O	D	E	X	R	A	E	H	I	A	E	R	T	C	L
U	E	C	M	P	C	E	C	O	T	A	L	O	D	V
S	N	O	M	F	B	U	B	A	U	H	Y	O	G	G
E	C	Y	J	I	L	R	S	Z	R	S	O	R	J	A
K	U	D	M	O	O	F	Y	W	W	Y	E	N	Z	A
H	P	S	O	Z	L	O	C	O	M	O	T	I	V	E

Ticonderoga
Steamship
Blacksmith
Circus
Carousel
Sawmill
Apothecary
Schoolhouse

Electra
Telegraph
Lighthouse
Locomotive
Garden
Pulley
Decoy

End-of-Day/ Post-Trip Reflection

What was a favorite moment from your visit to Shelburne Museum? Was it an interesting artwork or object? A certain building? Something funny that happened?

If you could come back to the Museum, what would you like to spend more time exploring, and why?

What new questions/wonderings do you have after your visit?

Write or draw about something new that you learned at the Museum.

