



FOR IMMEDIATE RELEASE

SHELBURNE MUSEUM UNVEILS EXCITING LINEUP FOR 2024 EXHIBITION SEASON

SHELBURNE, Vt. (January 19, 2024) — Shelburne Museum has announced its 2024 exhibition season which opens on May 11 and runs through October 20. This season features an immersive journey through the history of the railroad in American Art, diverse artistic expressions from contemporary artists in New England, stunning black and white circus photography from the '70s, masterfully crafted 19th-century Vermont furniture, and much more!

Northern New England's largest art and history museum will be open daily from 10 a.m. to 5 p.m., beginning Saturday, May 11 through Sunday, October 20, 2024.

This season's exhibitions include:



All Aboard: The Railroad in American Art, 1840-1955

JUNE 22 THROUGH OCTOBER 20, 2024

Embark on a journey through American history and explore the captivating world of trains in American visual culture during the transformative period of industrialization from 1840 to 1955. Organized by Shelburne Museum, Dixon Gallery and Gardens, and Joslyn Art Museum.



New England Now: Strange States

MAY 11 THROUGH OCTOBER 20, 2024

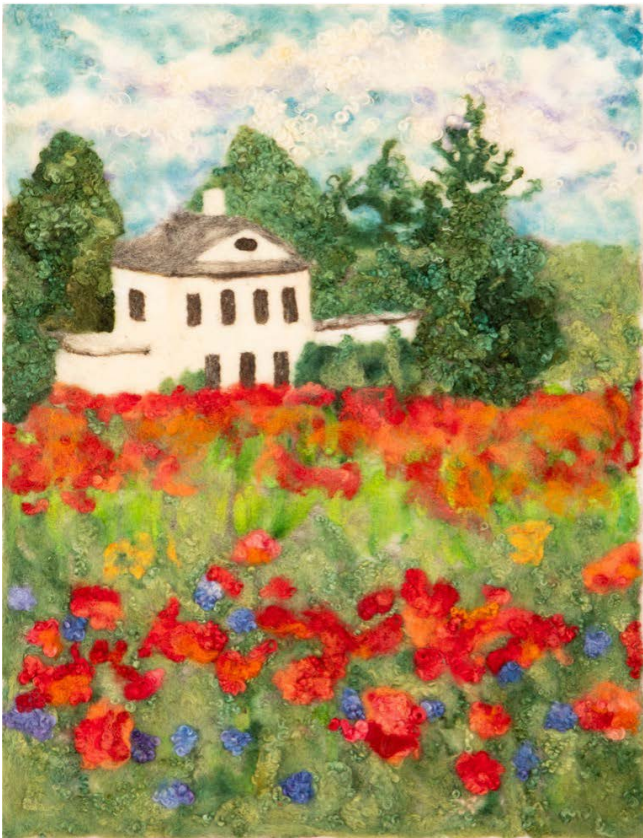
From Nathaniel Hawthorne to Stephen King, the depths of the psyche and the surreal have long fascinated New England artists. Twelve multidisciplinary artists from the region tap into a rich tapestry of mediums and techniques to create their perceptions of the ethereal grounded in topics of mythology, environmentalism, the ideals of beauty, transformation, and gender and cultural identity.



Confected, Borrowed & Blue: Transferware by Paul Scott

MAY 11 THROUGH OCTOBER 20, 2024

The first in a series of “interventions” by contemporary artists features works by British artist Paul Scott, known for his provocative reinterpretation of 19th-century transferware. Plates, platters, and jugs by Scott will be displayed alongside objects from the museum’s collection creating “segues” that spark dialogue between the old and new.



Lorna McMaster: Stewarding a Seed Collection

MAY 11 THROUGH OCTOBER 20, 2024

Contemporary fiber artist Lorna McMaster explores the interdependence of pollinators, native plants, and local communities through her exquisite felted wool portraits and landscapes. Lorna McMaster: Stewarding a Seed Collection offers a poignant reflection on the delicate balance between nature and humanity, highlighting the importance of preserving our ecosystems.



A Grand Spectacle in the Great Outdoors: Elliot Fenander's Circus Photography

MAY 11 THROUGH OCTOBER 20, 2024

Transport yourself to the enchanting world of the circus with A Grand Spectacle in the Great Outdoors. Elliot Fenander's black-and-white photography captures a rare "Blue Sky" outdoor performance by the Clyde Beatty-Cole Bros. Circus in 1972, offering a unique glimpse into the magic and excitement of circus life.



Vermont Furniture at Shelburne Museum

MAY 11 THROUGH OCTOBER 20, 2024

Discover the craftsmanship and artistry of Vermont furniture in this new installation showcasing some of the finest chests, chairs, tables, and more from the 19th century to the present. Vermont Furniture at Shelburne Museum celebrates the rich material culture of the state and its enduring influence on interior design.

For more information, please visit www.shelburnemuseum.org/exhibitions/upcoming/

High-resolution images are available [HERE](#).

Image captions:

1. Carl Frederick Gaertner, *SwampSpur*, 1944. Oil on canvas, 24 x 40 in. The John and Susan Horseman Collection, 2007
2. Emilie Stark-Menneg, *Iris Spring*, 2022. Acrylic and oil on canvas, 80 x 100 in. Courtesy of the artist.
3. Paul Scott, *Cumbrian Blue(s), New American Scenery, Sampler Jug, No. 7, (After Stubbs)*, 2021. Transfer print collage on pearlware jug, 15 x 14 x 11 ³/₄ in. Courtesy of artist and Ferrin Contemporary. Image courtesy of Ferrin Contemporary. Photography by John Polak
4. Lorna McMaster, *Bee the Change At Shelburne Museum*, 2023. Homegrown, hand-dyed, needle-felted Border Leicester X Shetland wool on cotton, 31½ x 24 in. Courtesy of Lorna McMaster. Photography by Andy Duback.
5. Elliot Fenander, *Outdoor Tightrope Walkers*, 1965–69. Negative, 1½ x 1 in. Collection of Shelburne Museum, gift of Elliot and Phyllis Fenander.
6. Nahum Parker (Middlebury, Vermont, 1789–1876) *Sofa*, ca. 1830. Mahogany, white pine, with mahogany veneer, and brass, 35 x 84 x 20 ½ in. Collection of Shelburne Museum, gift of J. Brooks Buxton.

About Shelburne Museum

Founded in 1947 by trailblazing folk art collector Electra Havemeyer Webb (1888–1960), Shelburne Museum in Shelburne, Vermont, is the largest art and history museum in northern New England and Vermont's foremost public resource for visual art and material culture. The Museum's 45-acre campus is comprised of 39 buildings including the Pizzagalli Center for Art and Education and Webb Gallery featuring important American paintings by Andrew Wyeth, Winslow Homer, Grandma Moses, John Singleton Copley and many more. For more information, please visit shelburnemuseum.org.

For media inquiries, please contact:**Leslie Wright**

Director of Marketing and Communications

Shelburne Museum

lwright@shelburnemuseum.org

802-985-0880

Kristen Levesque

Kristen Levesque Public Relations

kristen@kristenlevesquepr.com

207-329-3090