

2023 EXHIBITIONS



**FOCUS EXHIBITION**  
**June 24–October 22**  
**Built from the Earth: Pueblo Pottery from the Anthony and Teresa Perry Collection**

MURPHY GALLERY  
PIZZAGALLI CENTER FOR ART AND EDUCATION  
  
Maker formerly known [Haak'u (Acoma Pueblo)], *Polychrome Jar*, ca. 1890. Perry Collection of Native American Arts. PT47. Photography by Andy Duback.



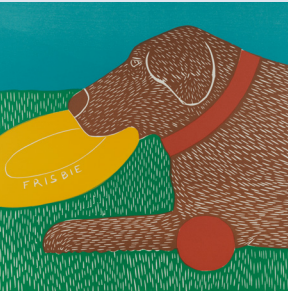
**May 13–October 22**  
**Object/s of Play: The Work of Cas Holman and Karen Hewitt**

COLGATE GALLERY  
PIZZAGALLI CENTER FOR ART AND EDUCATION  
  
Cas Holman, *Rigamajig Junior*. Photography by Thalassa Raasch. Courtesy of the artist.



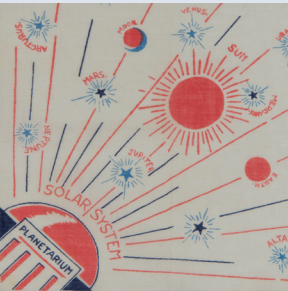
**May 13–October 22**  
**Pop Up: Inflated Sculpture**

MUSEUM GROUNDS AND SELECT BUILDINGS  
SEE MAP FOR LOCATIONS  
  
Claire Ashley, *Adam's Madam (Divided)*, 2021 Rooftop Installation at Kimball Arts Center, Chicago, IL. Spray paint, ripstop nylon, fan. Approx. 22' x 35' x 20'. Photography by Ian Ace, courtesy of the artist.



**May 13–October 22**  
**Pet Friendly: The Art of Stephen Huneck**

PLEISSNER GALLERY  
  
Stephen Huneck, *Dog Toys [Good Boy]*, 1997. Woodcut print, 18 1/2 x 25 1/2 in. Collection of Shelburne Museum, gift of the Friends of Dog Mountain, Inc. 2022-3.6. Photography by Andy Duback.



**May 13–October 22**  
**Right Under Your Nose: Children's Printed Textiles from the Collection of J.J. Murphy and Nancy Mladenoff**

THE DANA-SPENCER TEXTILE GALLERIES AT HAT AND FRAGRANCE  
  
Unidentified designer and manufacturer, *Solar System Child's Handkerchief*, date unknown. Printed cotton, 9 x 8 1/2 in. Collection of Shelburne Museum, gift of Nancy Mladenoff and J.J. Murphy. 2020-9.2751. Photography by Andy Duback.

Maker formerly known [Haak'u (Acoma Pueblo)], *Polychrome Storage Jar (detail)*, ca. 1880–90. Perry Collection of Native American Arts. PT43.

MUSEUM HIGHLIGHTS

**Electra Havemeyer Webb Memorial Building**  
French Impressionist collection and furnished rooms from the home of Museum founder Electra Havemeyer Webb.

**Ticonderoga**  
220-foot sidewheel steamboat moved to Museum grounds by Electra Havemeyer Webb. A National Historic Landmark, a remarkable story.

**Pizzagalli Center for Art and Education**  
New and changing exhibitions, auditorium, and classroom in this state-of-the-art, LEED certified building.

**The Dana-Spencer Textile Galleries at Hat and Fragrance**  
A multitude of quilts, rugs, samplers, new exhibitions, and more.

**Stagecoach Inn**  
Newly renovated and reinstalled galleries for the Museum's renowned collection of American folk art, sculpture, trade signs, weathervanes, and whirligigs.

**Webb Gallery**  
Highlights from the Museum's American paintings collection including works by Andrew Wyeth, Winslow Homer, William Matthew Prior, and more.

**Dorset House**  
Home to Shelburne Museum's world-renowned waterfowl decoy collection.

TOURS AND TALKS

**Favorite Things**  
Enjoy a brief, in-depth investigation of beloved artworks with a knowledgeable, personable guide. *Painting a Nation: American Art at Shelburne Museum* 11 a.m. and 1:30 p.m. daily, May 13–October 22, Webb Gallery. Allow 10–20 minutes.

**Exploring the Colonial Revival: Prentis & Stencil Houses**  
11 a.m., 1 p.m., and 3 p.m. daily, May 13–October 22, begin at Prentis House. Allow 45 minutes.

**Full Steam Ahead: Walking Tours of the Ticonderoga**  
11:30 a.m. and 2:30 p.m. daily, May 13–October 22. Allow 25–35 minutes.

**M Making the Museum (self-guided)**  
Look for signs throughout the grounds exploring Electra Havemeyer Webb's creativity in developing Shelburne Museum.



6000 Shelburne Road, Shelburne, Vermont 05482  
(802) 985-3346  
[www.shelburnemuseum.org](http://www.shelburnemuseum.org)

CUSTOMS AND COURTESIES

- For the comfort and safety of our guests and the preservation of our collections we have established the following guidelines:
- Food and drink are not allowed inside exhibit buildings.
  - Smoking, including electronic cigarettes, is prohibited on the Museum grounds. We allow smoking in the main parking lot only.
  - Pets are not allowed inside the Museum grounds. Vermont state law prohibits leaving animals in vehicles during warm weather. If you are visiting with a service animal, please consult with Museum staff.
  - Strollers and backpacks are restricted in some buildings. Please consult the map for locations marked with ▲ and inquire at buildings.
  - Shoes and shirts are required inside Museum buildings.
  - Please refrain from phone conversations in exhibit buildings.
  - Photography, without flash, and video are permitted in many buildings; however, photography may be prohibited in special exhibitions. Tripods and selfie sticks are prohibited for all indoor use. Flash photography is restricted in some exhibits. All photography is limited to personal use. During your visit, you may be photographed for promotional purposes.
  - Please do not touch any artwork or objects. Accidental handling can damage or destroy objects.
  - Bicycles, scooters, and Segways are prohibited on the Museum grounds. A bike rack is located at the main entrance.

HOURS

Open May 13–October 22, every day including holidays, 10 a.m.–5 p.m.  
  
**Museum Store:** May 13–October 22, every day, 10 a.m.–5:30 p.m.  
  
**The Weathervane Café:** Open May 13–October 22, every day, 11 a.m.–3 p.m. Sandwiches, salads, specials, snacks, and ice cream.

ACCESSIBILITY

A physical accessibility guide is available at admissions and on the Museum website. Wheelchairs and wagons are available free of charge. Please contact admissions to reserve wheelchairs at 802-985-3346 x 3144.  
  
**Museum Shuttle** On-site transportation is provided, with designated stops along the 1-mile route. The last 15-minute circuit begins at 5 p.m. Operational May 13–October 22.

MEMBERSHIP

Unlimited free admission to the Museum for a full year, discounts, and invitations to events. Credit your admission fee toward membership. Learn more at admissions or at [shelburnemuseum.org](http://shelburnemuseum.org).

GROUPS AND RENTALS

Special rates are available for groups of 15 or more. Contact (802) 985-3346, x 3142 for pricing.  
  
Select Museum facilities available for meetings, weddings, and special events. Call (802) 985-0919 for information.



Visitor's  
Guide  
2023



GARDENS

With 20 beautiful gardens, visitors will find an array of exquisite plants blooming in any season.

- A7 Railroad Station Gardens
- B10 Circus Building Daylily Garden ▼



- C5 Gardens of Pleissner Courtyard
- E3 Meeting House Garden
- E4 Apothecary Garden
- E5 Diamond Barn Garden
- E5 Owl Cottage Garden ▼



- F1 Dyer's Garden
- F2 Danby Fountain Garden
- F5 Bostwick Garden ▼



- F5 Prentis/Stencil Garden Path
- F10 Entrance Garden
- F10 Welcome Garden ▼



- G3 Vermont House Garden
- G3 Dutton Dooryard Garden
- G4 The Pauline Cropper Mallory Heritage Garden at Dutton House
- I1 The Dana-Spencer Textile Galleries at Hat and Fragrance Garden
- I2 Alyssia's Garden
- I4 Settlers' Gardens
- I6 The Eagle Garden

Stay up to date on what's in bloom by visiting us on social media.

- Food Service
- Information
- Women/Men Restrooms
- All-Gender Restroom
- Lactation Suite
- Water Fountains
- Shuttle Route
- Shuttle Stops
- Tour Location
- Making the Museum (self-guided tour)
- Garden
- Pop Up: Inflated Sculpture

Strollers and child backpacks are prohibited in buildings identified with a ▲ to ensure the safety of our collections.



SHELBURNE MUSEUM BUILDINGS

- G9 Admissions Ticketing, information, and more.
- E4 Apothecary Shop (1959)
- C8 Beach Gallery (1960) *Lock, Stock and Barrel: The Terry Tyler Collection of Vermont Firearms.*
- C8 Beach Lodge (1960) Adirondack life and hunting.
- C3 Blacksmith Shop (Shelburne, VT, 1800) Metalwork demonstrations and exhibits.
- B9 Carousel (North Tonawanda, NY, ca. 1920) Travelling carnival model by Herschell-Spillman Company.
- B10 Circus Building (1965) Hand carved circus figures, carousel animals.
- I3 Covered Bridge (Cambridge, VT, 1845) Double-lane covered bridge with footpath.
- H1 The Dana-Spencer Textile Galleries at Hat and Fragrance (Shelburne, VT, ca. 1800) *Right Under Your Nose: Children's Printed Textiles from the Collection of J.J. Murphy and Nancy Mladenhoff.*
- H4 Dorset House (East Dorset, Vermont, ca. 1832) Wildfowl decoy collections.
- G3 Dutton House and Tavern (Cavendish, VT, 1782) Life in 1820s Vermont.
- G6 Electra Havemeyer Webb Memorial Building (1967) Furnished rooms and Impressionist art from the New York City home of Museum founder Electra Havemeyer Webb.
- E4 General Store (Shelburne, VT, 1840) Barbershop, post office, and taproom.
- E2 Horseshoe Barn (1949) Carriages, wagons, and sleighs.
- D1 Horseshoe Barn Annex (1957) Farm and trade wagons, stagecoaches, specialty vehicles.
- H1 Jail (Castleton, VT, 1890) Slate jail building.
- E6 Lighthouse (Colchester Reef, Lake Champlain, 1871)
- B7 Locomotive 220 (1915) 10-wheel steam locomotive.
- E3 Meeting House (Charlotte, VT, 1840) *Green Mountain Medley: 200 Years of Music Made in Vermont.*
- Outdoor Sculpture: *Pop-Up: Inflated Sculpture.*
- C9 May 13–July 7: Circus Building
- E6 July 8–September 1: Near Ticonderoga & Diamond Barn
- G6 September 2–October 22: Electra Havemeyer Webb Memorial Building
- D5 Owl Cottage Activity Center (1956)
- H8 Pizzagalli Center for Art and Education (2013) See Exhibitions
- C5 Pleissner Gallery (1986) *Pet Friendly: The Art of Stephen Huneck.*
- F5 Prentis House (Hadley, MA, 1773) *Open for guided tours only.* Colonial Revival installation of 17th–18th century furniture and decorative arts. Open for guided tours only: see Tours and Talks.
- E1 Print Shop (1955) Presses from the 1820s to 1950s.
- B8 Rail Car *Grand Isle* (1890)
- B8 Railroad Freight Shed (1963) Steam engine replica.
- A7 Railroad Station (Shelburne, VT, 1890) Stationmaster's office and railroad maps.
- E9 Round Barn (East Passumpsic, VT, 1901) *Trailblazers: Horse-Powered Vehicles.*
- J4 Sawmill (1957) 1787 up-and-down saw and related machinery.
- J2 Schoolhouse (Vergennes, VT, ca. 1840)
- I4 Settlers' House (East Charlotte, VT, ca. 1800) and Barn (2001). Life in settlement-era Vermont.
- G1 Shaker Shed (Canterbury, NH, 1840) Open air relaxation lounge on ground level. *Upper level closed.*
- H2 Smokehouse (Charlotte, VT, ca. 1820)
- H2 Stagecoach Inn (Charlotte, VT, ca. 1787) Folk art sculpture, trade signs, weathervanes, and more.
- F4 Stencil House (Sherburne, NY, ca. 1804) *Open for guided tours only.* Stenciled walls, painted furniture, decorative arts. Open for guided tours only: see Tours and Talks.
- I2 Stone Cottage (South Burlington, VT, ca. 1840). Farm laborer's two-room house.
- C6 Ticonderoga (Shelburne Harbor, VT, 1906) 220-foot sidewheel steamboat.
- I1 Toy Shop (In situ, ca. 1835) Early toys; operating American Flyer toy train.
- J1 Variety Unit (In situ, ca. 1835) Decorative arts, glassware, pewter, ceramics, dolls, and more.
- F3 Vermont House Gallery (Shelburne, VT, 1790) *Something Old, Something New: Continuity and Change in American Furniture and Decorative Arts, 1700–1820.*
- D4 The Weathervane Café (ca. 1955) Sandwiches, salads, specials, snacks, and ice cream.
- F1 Weaving Shop (1955) Jacquard and other looms. *Closed in 2023.*
- H5 Webb Gallery (1960) *Painting a Nation: American Art at Shelburne Museum.*