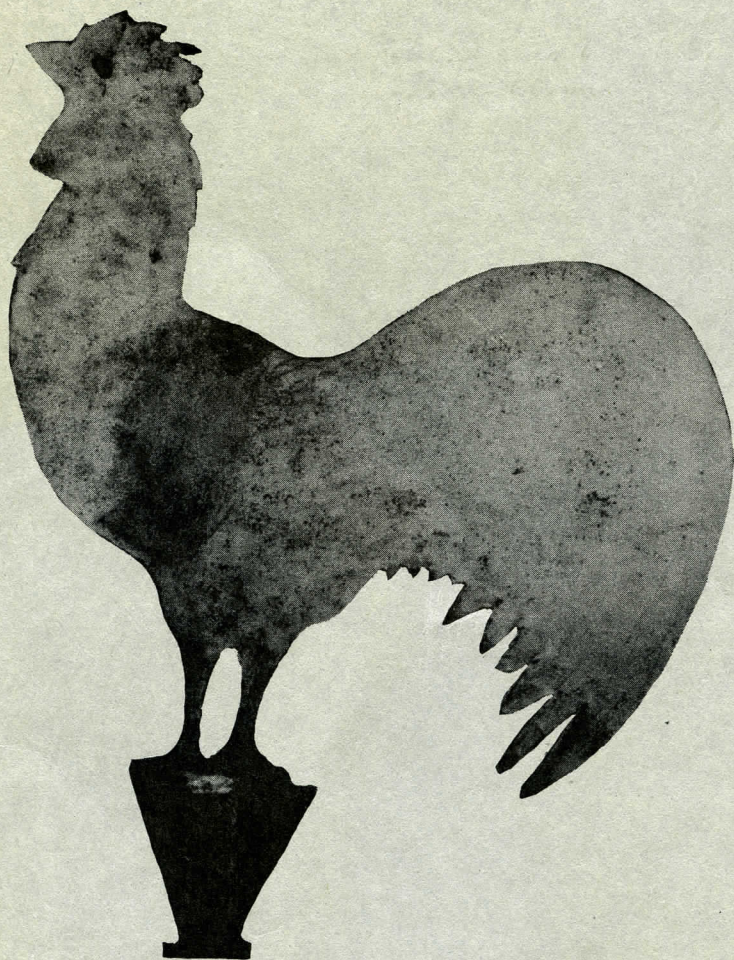


A Museum Collection



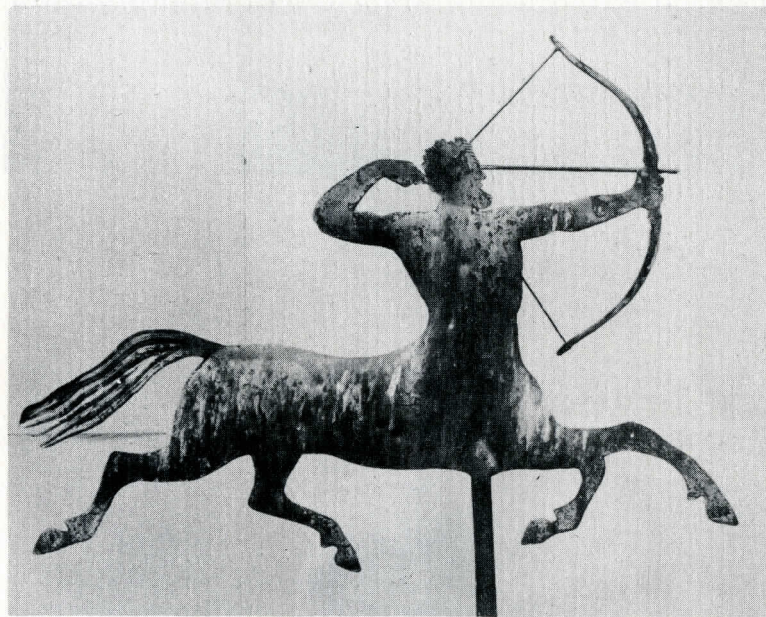
AMERICAN
FOLK SCULPTURE

Exhibition from May 16 through June 2, 1950.

The DOWNTOWN GALLERY

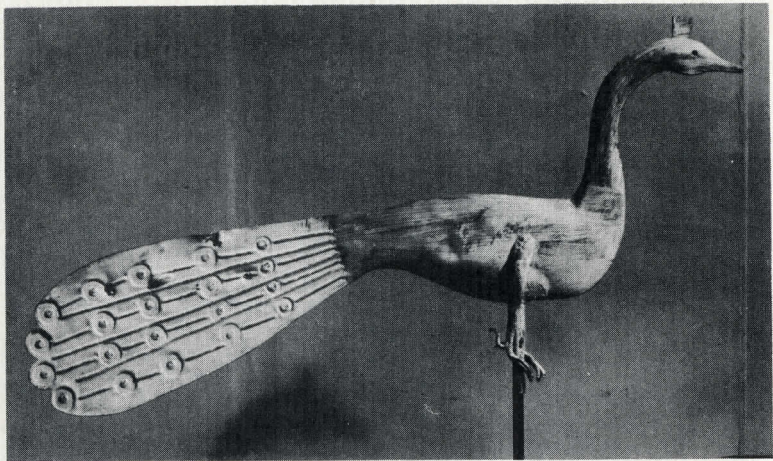
32 East 51 Street

New York



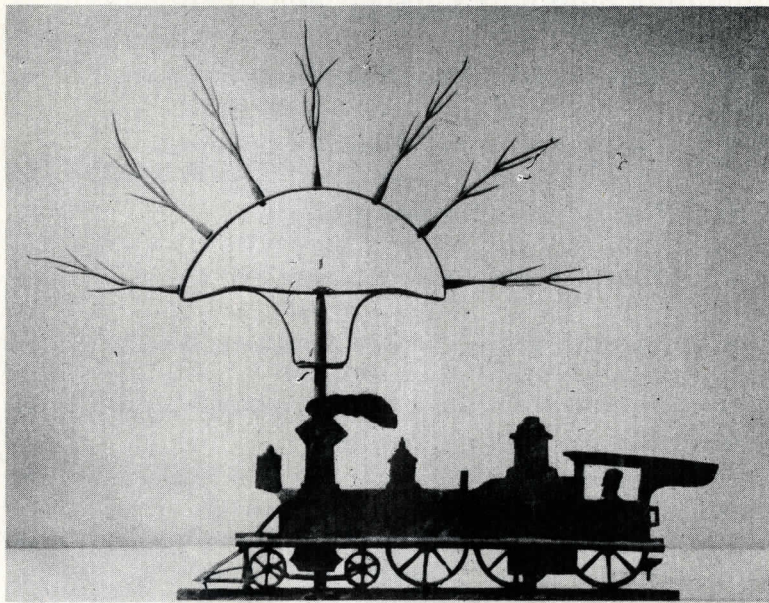
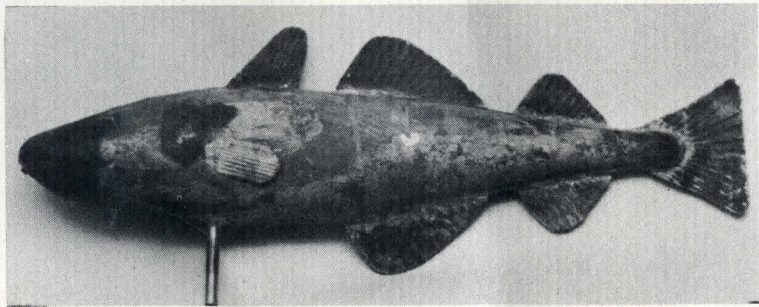
14

27 CROWING COCK Weatherovane Sheet iron in silhouette.
(illustrated on cover)



16

21



26

C A T A L O G U E

- | | | | |
|------|--|------|---|
| ✓ 1 | PILGRIM Ship's figurehead.
Inscribed 1781. Polychromed mahogany. | ✓ 14 | CENTAUR Weathervane. Copper in quarter round. |
| ✓ 2 | HEAD Woodcarving by Simeon Skillin. 18th century. | ✓ 15 | PHEASANT Weathervane. Copper in half round. |
| 3 | GEORGE WASHINGTON ON HORSEBACK
Painted woodcarving. | ✓ 16 | PEACOCK Weathervane. Lead and copper. |
| ✓ 4 | MENNONITES Painted woodcarving. | ✓ 17 | FORMAL HORSE Weathervane. Cast Iron. |
| ✓ 5 | CONNECTICUT BIRD Painted woodcarving. | 18 | TROTTING HORSE Weathervane.
Sheet iron with applied relief. |
| 6 | EAGLE Painted woodcarving. | 19 | DORSET RAM Weathervane. Copper and zinc. |
| 7 | SPREAD EAGLE Woodcarving. | 20 | STEER Weathervane.
Painted sheet iron silhouette. |
| ✓ 8 | DAPPLED HORSE Probably saddler's sign.
Painted woodcarving. | ✓ 21 | FISH Weathervane. Copper in full round. |
| ✓ 9 | BUTCHER'S SIGN Cast iron. | ✓ 22 | FORMAL ROOSTER Weathervane. Cast and sheet iron. |
| 10 | CIRCUS FIGURE Painted woodcarving. | ✓ 23 | MINIATURE ROOSTER Weathervane. Copper and lead. |
| ✓ 11 | CIRCUS FIGURE Painted woodcarving. | 24 | INDIAN HUNTER Weathervane.
Painted wood silhouette. |
| ✓ 12 | ANGEL GABRIEL Weathervane. Painted woodcarving. | 25 | EAGLE Weathervane. Hammered copper. |
| ✓ 13 | GAME BIRD Weathervane. Woodcarving. | ✓ 26 | LOCOMOTIVE Weathervane. Copper, brass, and iron. |

Unless otherwise indicated, all exhibits were executed by unidentified artists of the 18th or 19th centuries.



1

